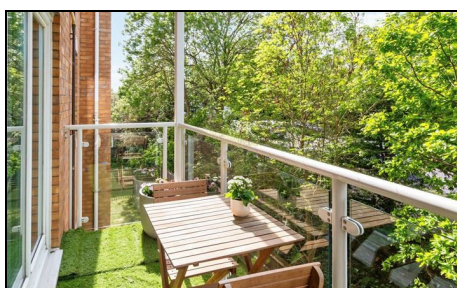


Greenview Drive Raynes Park, SW20 9DS

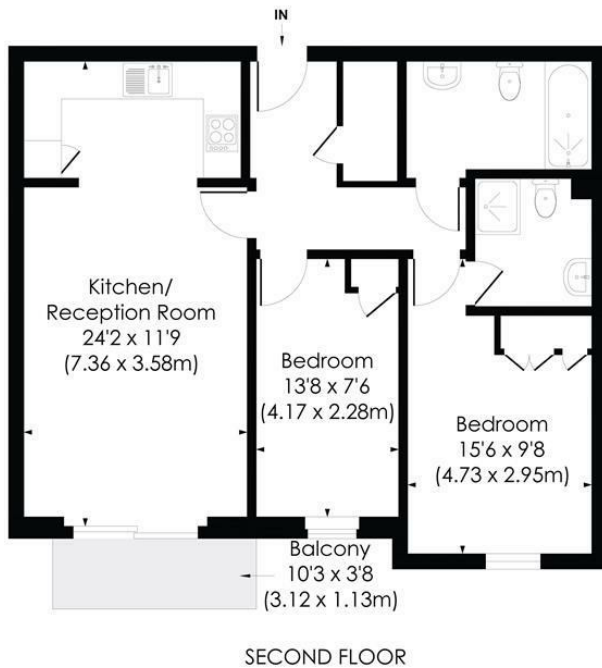
£450,000 Leasehold



This beautifully presented 726 sqft TWO DOUBLE BEDROOM, TWO BATHROOM Second floor apartment is perfectly located for Raynes Park station and high street. The apartment comprises a superb open plan kitchen/reception room with a spacious balcony, two double bedrooms (principal bedroom with en suite) and a modern family bathroom. There is also an allocated parking space included, entry phone system and lift access.

GREENVIEW DRIVE, SW20

Approx. Gross Internal Floor Area
726 Sq. ft/67.43 Sq. m

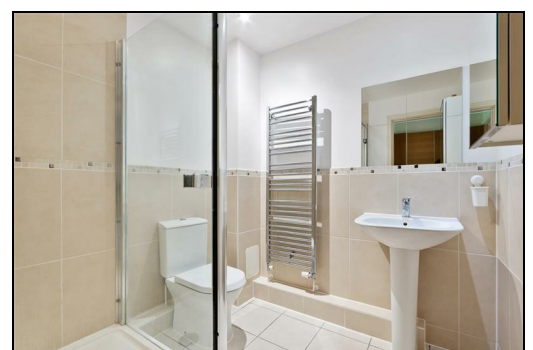


© Pixangle Property Marketing Ltd. info@pixangle.com Tel: 0208 870 2118



This floor plan has been prepared for the purpose of illustration only in accordance with the latest RICS code of measuring practice and is not to scale. All measurements and areas are approximate and whilst every effort has been made to ensure the accuracy of the plan contained here, no responsibility is taken for any error, omission or misstatement.

- Two Double Bedroom - Two Bathroom
- Modern Second Floor Apartment
- Allocated Parking Space
- Lift Access and Entryphone System
- Superb Open Plan Kitchen/Reception Room
- Close To Raynes Park High Street And Station
- Beautifully Presented Throughout
- Communal Gardens And Bike Storage
- EPC - B
- Council Tax Band - D



Energy Efficiency Rating		Current	Potential
Very energy efficient - lower running costs			
(92 plus)	A		
(81-91)	B	82	82
(69-80)	C		
(55-68)	D		
(39-54)	E		
(21-38)	F		
(1-20)	G		
Not energy efficient - higher running costs			
England & Wales		EU Directive 2002/91/EC	

For Free Mortgage Quote and Best Mortgage Rates, call Ellisons Mortgage Advisor on 0208 944 9595



Although these particulars are believed to be correct, their accuracy is not guaranteed and they do not form part of any contract.

Celebrating 30 years of successful Sales and Lettings in Merton

